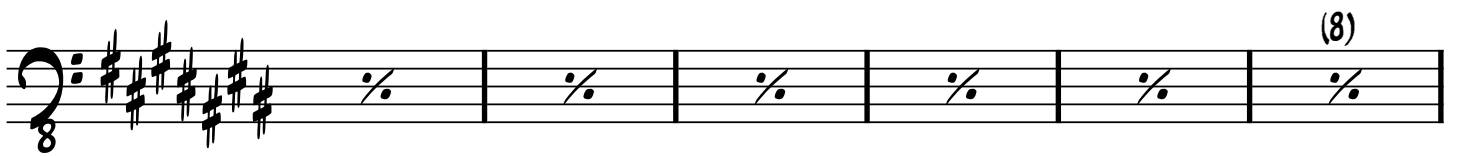
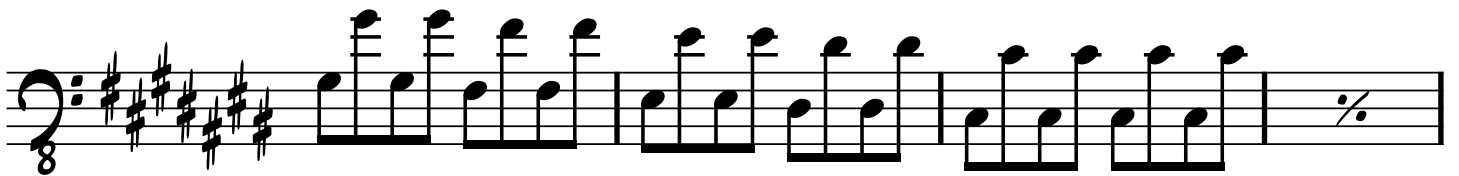
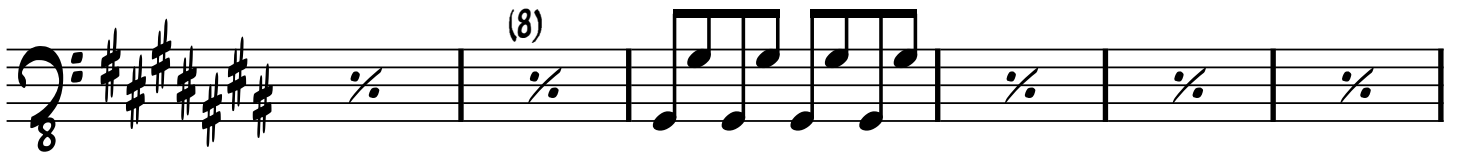
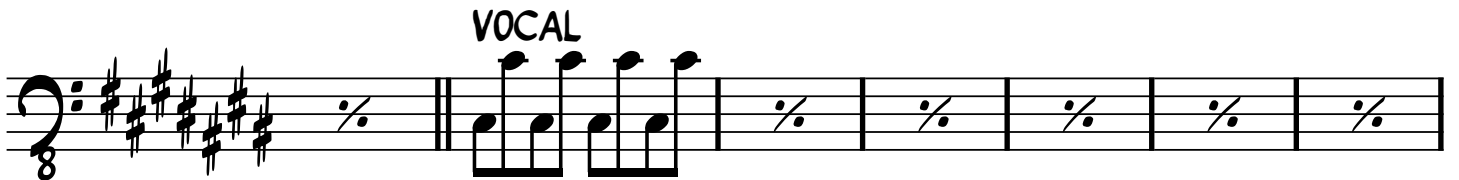
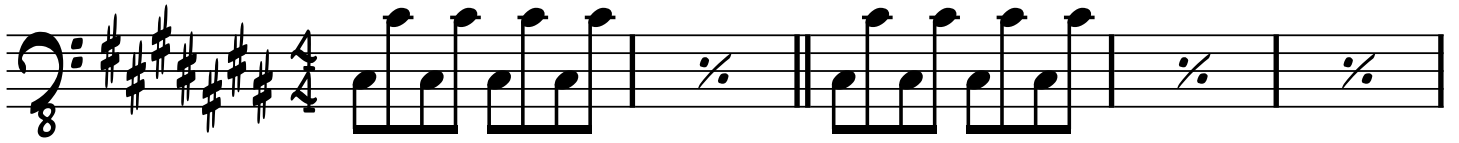




Funkytown



Bass



First musical staff in bass clef with a key signature of three sharps (F#, C#, G#) and a 3/8 time signature. It contains a melodic line of eighth notes followed by three measures, each with a fermata and a '2' above it.

INST.

Second musical staff, labeled 'INST.', containing a melodic line of eighth notes and two measures with fermatas and '2's above them.

To Coda

Third musical staff, labeled 'To Coda', starting with a fermata and '2' above it, followed by a double bar line and a sequence of eighth notes and quarter notes.

Fourth musical staff, continuing the sequence of eighth notes and quarter notes from the previous staff.

Fifth musical staff, continuing the sequence of eighth notes and quarter notes.

D.C. al Coda

Sixth musical staff, labeled 'D.C. al Coda', containing three measures with fermatas and '2's above them.

⊕

REPEAT AD LIB TO FADE

Seventh musical staff, labeled 'REPEAT AD LIB TO FADE', enclosed in repeat brackets and containing a melodic line of eighth notes and a final measure with a fermata and a '2' above it.