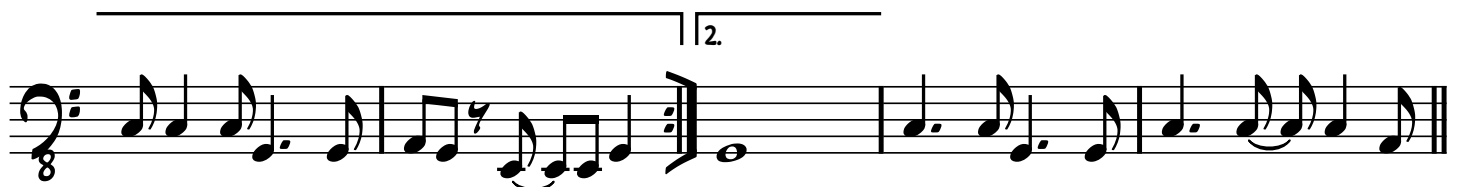




Have You Ever Seen The Rain?

BRITISH MUSIC WRITERS COUNCIL
TOM READ
MUSICIANS' UNION 4827

Bass



GUITAR SOLO

The first system consists of four staves of music in bass clef with an 8va symbol. The notes are: Staff 1: G2, A2, B2, C3, D3, E3, F3, G3. Staff 2: G3, A3, B3, C4, D4, E4, F4, G4. Staff 3: G4, A4, B4, C5, D5, E5, F5, G5. Staff 4: G5, A5, B5, C6, D6, E6, F6, G6. The piece concludes with the instruction *D.S. al Coda*.

The second system consists of four staves of music in bass clef with an 8va symbol. It begins with a C-clef symbol. Staff 1: G2, A2, B2, C3, D3, E3, F3, G3. Staff 2: G3, A3, B3, C4, D4, E4, F4, G4. Staff 3: G4, A4, B4, C5, D5, E5, F5, G5. Staff 4: G5, A5, B5, C6, D6, E6, F6, G6. A fermata is placed over the final note (G6) of the fourth staff.