

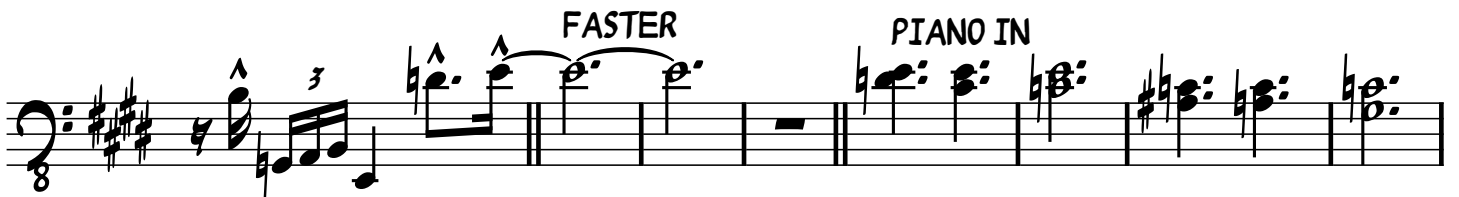


Buttercat Walk

BRITISH MUSIC WRITERS COUNCIL
TOM READ
MUSICIANS' UNION 4827

Gary Gould

Bass



HALF-TEMPO JAZZ SWING

First musical staff: Bass clef, 8/8 time signature, key signature of one flat. The staff contains four measures of eighth-note patterns, each marked with a '6' below. Above each measure are six '+' signs. The fifth measure is empty. The staff ends with a double bar line and a Coda symbol (a vertical line with a diagonal slash). The text "D.S. al Coda" is written above the staff.

Second musical staff: Bass clef, 8/8 time signature, key signature of one flat. The staff contains two measures of eighth-note patterns, each marked with an 'o' above. Above each measure are six '+' signs. The staff ends with a double bar line.

Third musical staff: Bass clef, 8/8 time signature, key signature of one flat. The staff contains two measures of eighth-note patterns, each marked with an 'o' above. Above each measure are six '+' signs. The staff ends with two measures marked with a '2' above and a double bar line with a diagonal slash.

Fourth musical staff: Bass clef, 8/8 time signature, key signature of one flat. The staff contains four measures of eighth-note patterns, each marked with a '6' below. Above each measure are six '+' signs. The staff ends with a double bar line and a Coda symbol (a vertical line with a diagonal slash).

Fifth musical staff: Bass clef, 8/8 time signature, key signature of one flat. The staff contains four measures of eighth-note patterns. The staff ends with a double bar line.