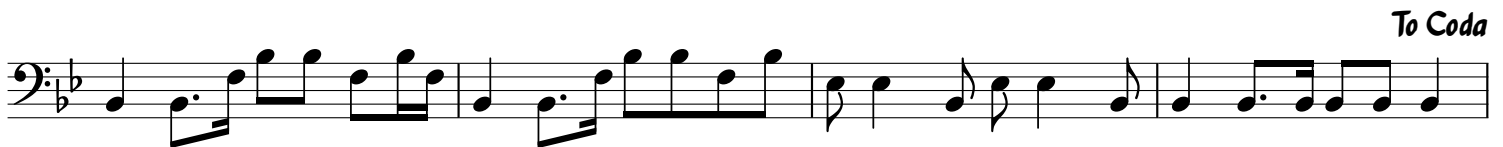
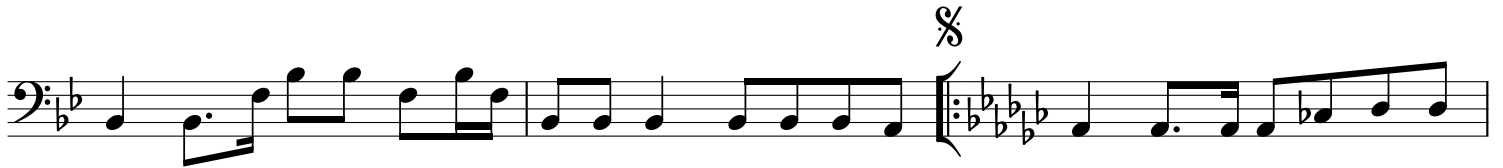




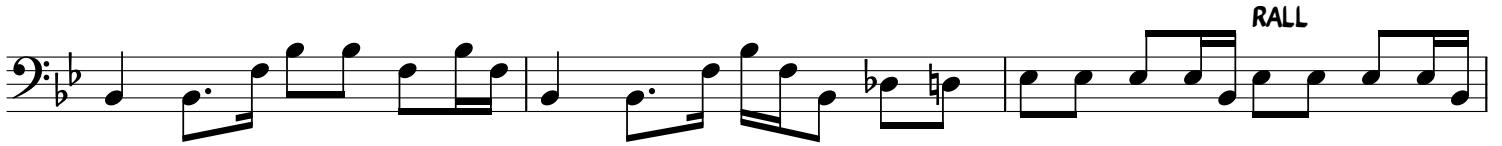
# Reach Out (I'll Be There)



Bass



*D.S. al Coda*

The first staff of music is written in bass clef with a key signature of one flat (B-flat). It consists of a single measure containing four quarter notes: B-flat, D, F, and B-flat, all tied together with a horizontal line.The second staff begins with a Coda symbol (a circle with a cross) above the first measure. The music continues with a sequence of eighth notes and quarter notes in the bass clef, maintaining the one-flat key signature.The third staff continues the musical piece with a sequence of eighth notes and quarter notes in the bass clef, maintaining the one-flat key signature.The fourth staff contains a sequence of eighth notes and quarter notes in the bass clef, maintaining the one-flat key signature.The fifth staff continues the musical piece. The word **RALL** is written above the staff in the second measure, indicating a deceleration. The music consists of eighth and quarter notes in the bass clef.The sixth and final staff on the page ends with a Coda symbol (a circle with a cross) above the last note, which is a whole note in the bass clef.