



# Dangerous Woman

Aung Warangkana



Bass

8

8

TAB

8

8

TAB

PLAY SIM.

8

8

TAB

8

8

TAB

8

8

TAB

LOW OCTAVE + CHORUS EFFECT



Bass staff 1: Musical notation in bass clef with a key signature of one sharp (F#). It features a sequence of eighth notes and quarter notes, with triplets indicated by a '3' and a bracket. The notation includes slurs and a fermata over the final note.

TAB staff 1: Corresponding guitar tablature for the first system. It shows fret numbers (7, 9, 12, 14) and includes triplets and slurs. The string layout is indicated by vertical lines below the fret numbers.

Bass staff 2: Musical notation in bass clef with a key signature of one sharp (F#). It features a sequence of eighth notes and quarter notes, with triplets indicated by a '3' and a bracket. The notation includes slurs and a fermata over the final note.

TAB staff 2: Corresponding guitar tablature for the second system. It shows fret numbers (16, 12-14, 14, 16-14, 14, 7, 14, 14, 12, 0, 7, 5, 7) and includes triplets and slurs. The string layout is indicated by vertical lines below the fret numbers.

Bass staff 3: Musical notation in bass clef with a key signature of one sharp (F#). It features a sequence of eighth notes and quarter notes, with triplets indicated by a '3' and a bracket. The notation includes slurs and a fermata over the final note.

TAB staff 3: Corresponding guitar tablature for the third system. It shows fret numbers (9, 7, 9, 7, 5, 7, 7, 12, 14, 14, 12, 14, 16, 14) and includes triplets and slurs. The string layout is indicated by vertical lines below the fret numbers.

Bass staff 4: Musical notation in bass clef with a key signature of one sharp (F#). It features a sequence of eighth notes and quarter notes, with triplets indicated by a '3' and a bracket. The notation includes slurs and a fermata over the final note.

TAB staff 4: Corresponding guitar tablature for the fourth system. It shows fret numbers (12, 11, 12, 14, 12, 14, 12, 10, 12, 14, 12, 9, 12, 9, 7, 12, 10, 10) and includes triplets and slurs. The string layout is indicated by vertical lines below the fret numbers.

Bass staff 5: Musical notation in bass clef with a key signature of one sharp (F#). It features a sequence of eighth notes and quarter notes, with triplets indicated by a '3' and a bracket. The notation includes slurs and a fermata over the final note.

TAB staff 5: Corresponding guitar tablature for the fifth system. It shows fret numbers (12, 14, 14, 12, 14, 12, 12, 12, 14, 14, 12, 14, 14) and includes triplets and slurs. The string layout is indicated by vertical lines below the fret numbers.



8

3 POP POP

TAB 16 14 12 14 12 16 14 12 14 16 16 12 14 12

8

TAB 12 9 7 9 7 5 7 9 14 12 14 14 14 12 16 14 12 14 16 19

8

TAB 19 16 12 14 0 7 5 7 9 7 5 7 7 5 5

8

TAB 7 9 9 7 9 16 14 12 14 14 12

8

TAB 12 10 12 12 0 0 0 0 3 3 3 3

Bass staff with treble clef, key signature of one sharp (F#), and time signature of 8. The staff contains a sequence of notes and rests, including triplets and slurs.

TAB staff corresponding to the first bass staff. It shows fret numbers (5, 7, 9, 7, 5, 12, 12, 14, 14, 12, 14, 14, 12, 12, 14, 14) and rhythmic notation.

Bass staff with treble clef, key signature of one sharp (F#), and time signature of 8. The staff contains a sequence of notes and rests, including triplets and slurs.

TAB staff corresponding to the second bass staff. It shows fret numbers (12, 14, 14, 12, 12, 14, 14, 12, 14, 16, 14, 12, 12, 14, 12, 14, 12, 14) and rhythmic notation.

Bass staff with treble clef, key signature of one sharp (F#), and time signature of 8. The staff contains a sequence of notes and rests, including triplets and slurs.

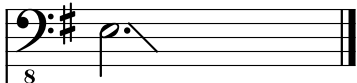
TAB staff corresponding to the third bass staff. It shows fret numbers (7, 9, 7, 9, 7, 5, 7, 5, 7, 14, 14, 12, 14, 12, 12, 3) and rhythmic notation.

Bass staff with treble clef, key signature of one sharp (F#), and time signature of 8. The staff contains a sequence of notes and rests, including triplets and slurs.

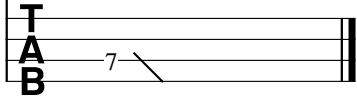
TAB staff corresponding to the fourth bass staff. It shows fret numbers (9, 7, 5, 7, 5, 7, 5, 7, 5, 3, 0, 3, 5, 7, 5, 7, 5, 7) and rhythmic notation.

Bass staff with treble clef, key signature of one sharp (F#), and time signature of 8. The staff contains a sequence of notes and rests, including triplets and slurs. A "(BEND)" instruction is present below the staff.

TAB staff corresponding to the fifth bass staff. It shows fret numbers (5, 7, 5, 5, 7, 9, 9, 9, 12, 14, 12, 9, 9, 5, 7, 5) and rhythmic notation.



8



T  
A  
B

|•