



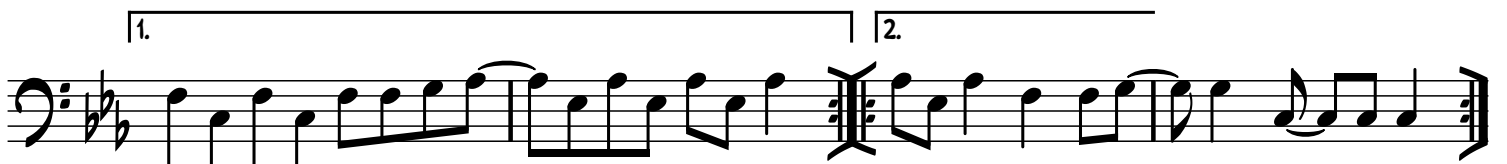
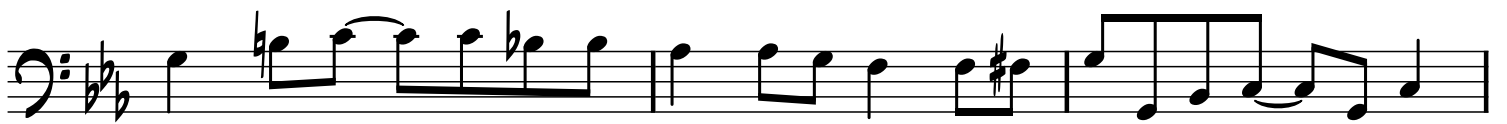
# Ain't No Mountain High Enough

BRITISH MUSIC WRITERS COUNCIL  
TOM READ  
MUSICIANS' UNION 4827

TOM READ BASS

Bass

The sheet music is written in bass clef, 4/4 time, with a key signature of two sharps (F# and C#). It consists of ten staves of music. The first staff begins with a double bar line and a repeat sign. The second staff contains a first ending bracket labeled '1.'. The third staff contains a second ending bracket labeled '2.'. The fourth and fifth staves continue the melodic line. The sixth staff features a first ending bracket labeled '1.' and a second ending bracket labeled '2.'. The seventh and eighth staves continue the melody. The ninth and tenth staves conclude the piece with a double bar line and repeat signs.



REPEAT TO FADE