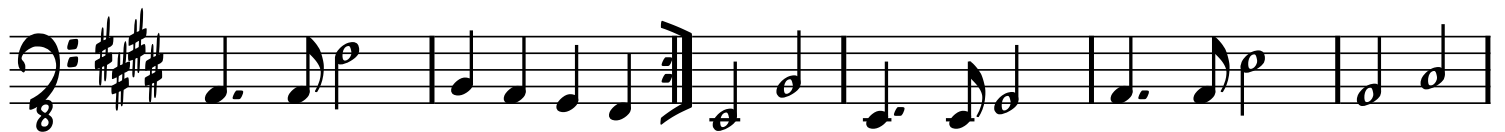
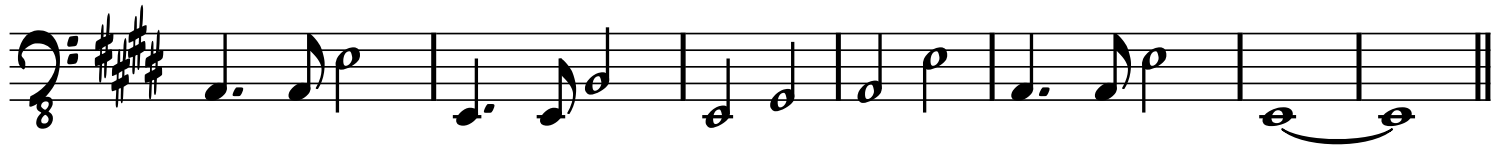
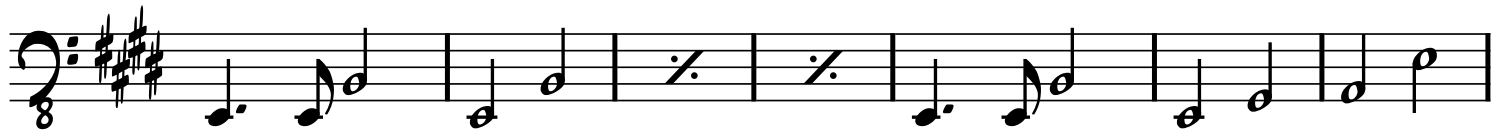
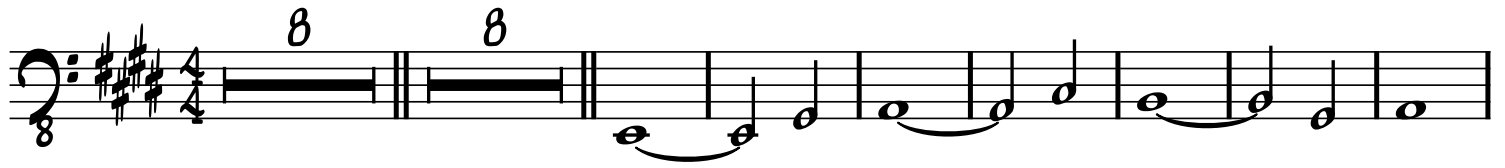




Walk of Life Medley



Bass



First staff of music: Bass clef, key signature of three sharps (F#, C#, G#), 8/8 time signature. The melody consists of quarter and eighth notes.

VOCAL

Second staff of music: Bass clef, key signature of three sharps, 8/8 time signature. The melody is marked 'VOCAL' and contains a repeat sign.

PRE-CHORUS

Third staff of music: Bass clef, key signature of three sharps, 8/8 time signature. The melody is marked 'PRE-CHORUS' and features two double bar lines with '2' and repeat signs above.

CHORUS

Fourth staff of music: Bass clef, key signature of three sharps, 8/8 time signature. The melody is marked 'CHORUS' and features a double bar line with a '2' and repeat sign above.

Fifth staff of music: Bass clef, key signature of three sharps, 8/8 time signature. The melody is marked with a double bar line, a '2', and a repeat sign above.

DRUMS

CHORUS

Sixth staff of music: Bass clef, key signature of three sharps, 8/8 time signature. The first part is marked 'DRUMS' and includes a drum rest and a '2' with a repeat sign. The second part is marked 'CHORUS' and contains a melodic line.

Seventh staff of music: Bass clef, key signature of three sharps, 8/8 time signature. The melody is marked with a double bar line, a '2', and a repeat sign above. A first ending bracket labeled '1.' spans the final two measures.

DRUMS

CHORUS

Eighth staff of music: Bass clef, key signature of three sharps, 8/8 time signature. The first part is marked 'DRUMS' and includes a drum rest and a '2' with a repeat sign. The second part is marked 'CHORUS' and contains a melodic line. A second ending bracket labeled '2.' spans the first three measures.

Ninth staff of music: Bass clef, key signature of three sharps, 8/8 time signature. The melody is marked with a double bar line, a '2', and a repeat sign above. The piece concludes with a final melodic phrase.