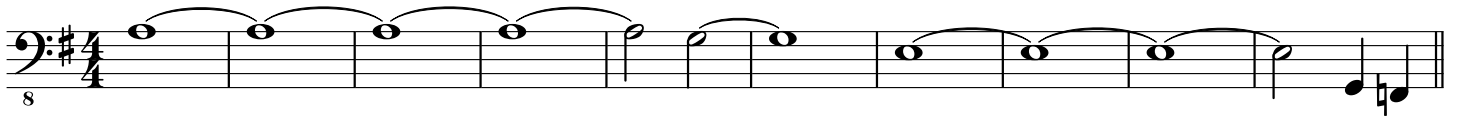




# Whiskey In The Jar

BRITISH MUSIC WRITERS COUNCIL  
TOM READ  
MUSICIANS' UNION 4827

Bass



Bass clef, key signature of one sharp (F#). Staff 1: 8. Musical notation with repeat signs.

Bass clef, key signature of one sharp (F#). Staff 2: 8. Musical notation with repeat signs. *D.S. al Coda*



Bass clef, key signature of one sharp (F#). Staff 3: 8. Musical notation with repeat signs.

Bass clef, key signature of one sharp (F#). Staff 4: 8. Musical notation with repeat signs. **VOCAL**

Bass clef, key signature of one sharp (F#). Staff 5: 8. Musical notation with repeat signs.

Bass clef, key signature of one sharp (F#). Staff 6: 8. Musical notation with repeat signs.

Bass clef, key signature of one sharp (F#). Staff 7: 8. Musical notation with repeat signs.

Bass clef, key signature of one sharp (F#). Staff 8: 8. Musical notation with repeat signs.

Bass clef, key signature of one sharp (F#). Staff 9: 8. Musical notation with repeat signs and a fermata.