



Superstar



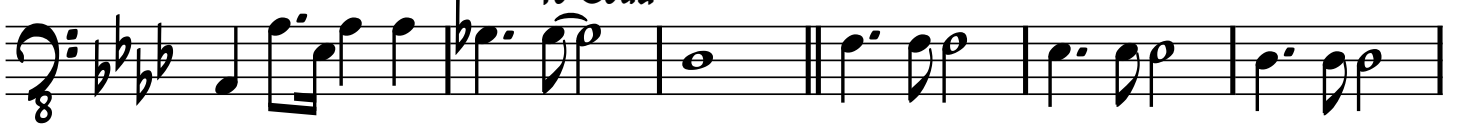
Bass



⌘
VOCAL



To Coda



D.S. al Coda



Three staves of musical notation in bass clef, 8/8 time, with a key signature of three flats. The first staff starts with a treble clef symbol and contains a melodic line with a repeat sign. The second staff continues the melodic line with eighth notes and beams. The third staff concludes the piece with a long note and a final chord.