



# Dreaming



Bass

DRUMS

VOCAL

CHORUS

The Chorus section consists of two staves of music. The first staff begins with a treble clef, a key signature of two sharps (F# and C#), and a 4/4 time signature. The melody is composed of eighth and quarter notes, with a final double bar line. The second staff continues the melody, also ending with a double bar line.

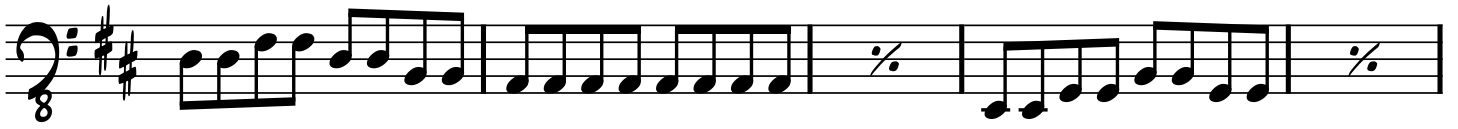
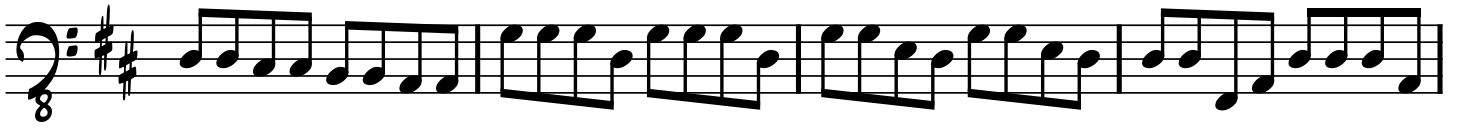
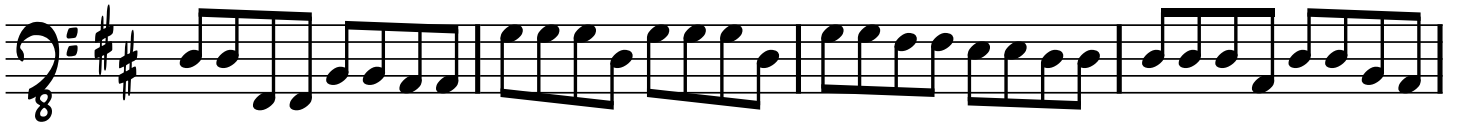
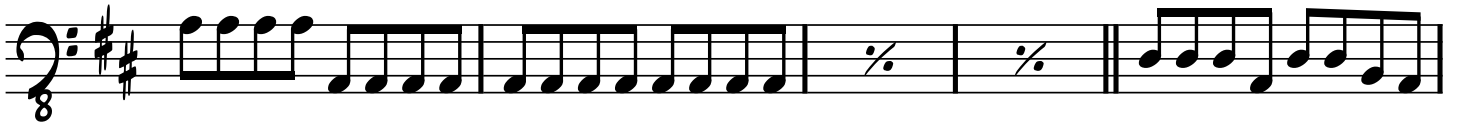
VERSE 2

Verse 2 consists of six staves of music. The first staff begins with a treble clef, a key signature of two sharps, and a 4/4 time signature. The melody is composed of eighth and quarter notes. The second staff continues the melody. The third staff continues the melody. The fourth staff continues the melody and includes a repeat sign (two dots) in the fourth measure. The fifth staff continues the melody. The sixth staff continues the melody and ends with a double bar line.

BRIDGE

The Bridge section consists of three staves of music. The first staff begins with a treble clef, a key signature of two sharps, and a 4/4 time signature. The melody is composed of eighth and quarter notes. The second staff continues the melody and includes a repeat sign (two dots) in the fourth measure. The third staff continues the melody and includes a repeat sign (two dots) in the second measure. The final measure of the third staff features a triplet of eighth notes with accents (>) above them, indicated by a bracket and the number '3' below.

VERSE 3



CHORUS - REPEAT AD LIB TO FADE

