

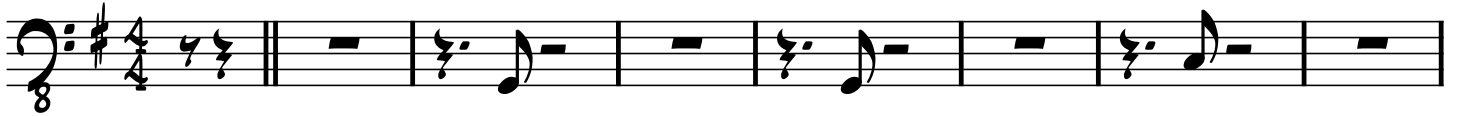


Strat Struttin'

BRITISH MUSIC WRITERS COUNCIL
TOM READ
MUSICIANS' UNION 4827

Bass

SHUFFLE FEEL



AD LIB ON RPTS/SIGN



The first staff of music is in bass clef, key of D major, and 12/8 time. It begins with a drum cue section consisting of a series of 'x' marks on a single note. This is followed by a melodic line starting on D4, moving to E4, F#4, G4, A4, B4, and then descending through A4, G4, F#4, E4, D4. The staff concludes with three measures, each containing a repeat sign.

DRUM CUE - SLOWER TEMPO

The second staff continues the melodic line from the first staff. It starts with a melodic phrase on D4, E4, F#4, G4, A4, B4, then descends to A4, G4, F#4, E4, D4. This is followed by a repeat sign, then a melodic phrase on D4, E4, F#4, G4, A4, B4, and finally another repeat sign.

The third staff continues the melodic line. It starts with a melodic phrase on D4, E4, F#4, G4, A4, B4, then descends to A4, G4, F#4, E4, D4. This is followed by a melodic phrase on D4, E4, F#4, G4, A4, B4, and finally a double bar line with a repeat sign.

D.C. al Coda

The fourth staff begins with a Coda symbol (a circle with a cross). The melodic line starts on D4, moving to E4, F#4, G4, A4, B4, then descending through A4, G4, F#4, E4, D4. The staff concludes with a double bar line.