

# Viva Las Vegas



Bass

First line of bass notation. It begins with a treble clef, a key signature of one sharp (F#), and a 4/4 time signature. The first four measures contain quarter notes: F#2, G2, A2, B2. The next two measures are repeat signs. The final measure is a double bar line. This is followed by a repeat sign, a fermata over the first measure, and the word "VOCAL" above the staff. The vocal line consists of quarter notes: F#2, G2, A2, B2. The next two measures are repeat signs.

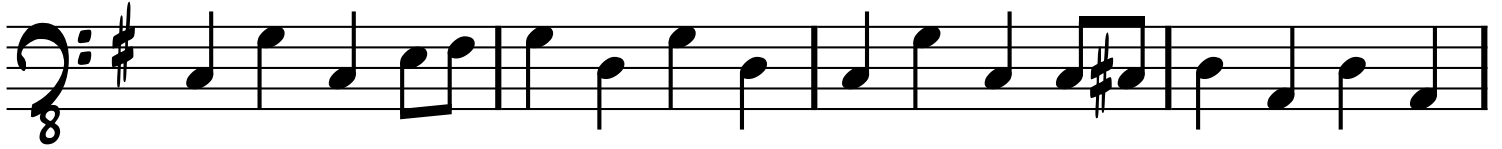
Second line of bass notation. It starts with a treble clef, a key signature of one sharp (F#), and a 4/4 time signature. The first four measures are repeat signs. The fifth measure is marked with a circled "7" above it. The sixth measure contains a quarter note G2 with an accent (>) above it. The seventh measure contains a quarter note A2 with an accent (>) above it. The eighth measure contains a quarter note B2. The final measure is a repeat sign.

Third line of bass notation. It starts with a treble clef, a key signature of one sharp (F#), and a 4/4 time signature. The first three measures are repeat signs. The fourth measure is marked with a circled "5" above it. The fifth measure contains a quarter note G2. The sixth measure contains a quarter note A2. The seventh measure contains a quarter note B2. The eighth measure contains a quarter note C3. The final measure contains a quarter note B2.

Fourth line of bass notation. It starts with a treble clef, a key signature of one sharp (F#), and a 4/4 time signature. The first four measures contain quarter notes: F#2, G2, A2, B2. The fifth measure contains a quarter note G2. The sixth measure contains a quarter note A2. The seventh measure contains a quarter note B2. The eighth measure contains a quarter note C3. The final measure contains a quarter note B2.

Fifth line of bass notation. It starts with a treble clef, a key signature of one sharp (F#), and a 4/4 time signature. The first four measures contain quarter notes: F#2, G2, A2, B2. The fifth measure contains a quarter note G2. The sixth measure contains a quarter note A2. The seventh measure contains a quarter note B2. The eighth measure contains a quarter note C3. The final measure contains a quarter note B2.

Sixth line of bass notation. It starts with a treble clef, a key signature of one sharp (F#), and a 4/4 time signature. The first four measures contain quarter notes: F#2, G2, A2, B2. The fifth measure contains a quarter note G2. The sixth measure contains a quarter note A2. The seventh measure contains a quarter note B2. The eighth measure contains a quarter note C3. The final measure contains a quarter note B2. Above the staff, there are four accents (>) over the eighth, ninth, tenth, and eleventh measures. The text "D.S. al Coda (No Repeat)" is written above the staff.



REPEAT AS REQUIRED



ON CUE: