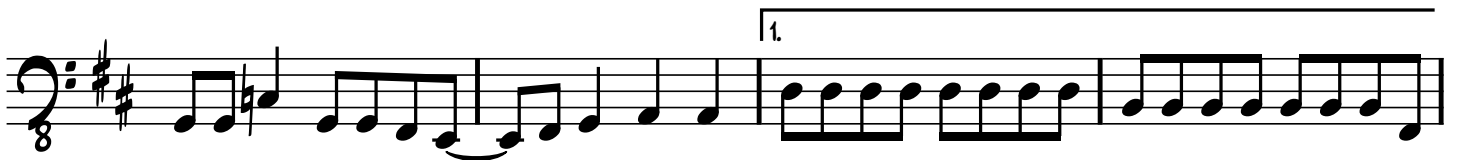




Mamma Mia



Bass



2.



First staff of music in bass clef, 8/8 time signature, key of D major. It begins with a first ending bracket over the first two measures, with a '2.' above it. The melody consists of eighth notes and quarter notes.



Second staff of music, continuing the melody from the first staff.



Third staff of music, featuring a repeat sign (double bar line with a slash) in the second measure.



Fourth staff of music, continuing the melody.



Fifth staff of music, continuing the melody.



Sixth staff of music, continuing the melody.

REPEAT TO FADE



Seventh staff of music, ending with a double bar line and repeat dots. The text 'REPEAT TO FADE' is positioned above the staff.