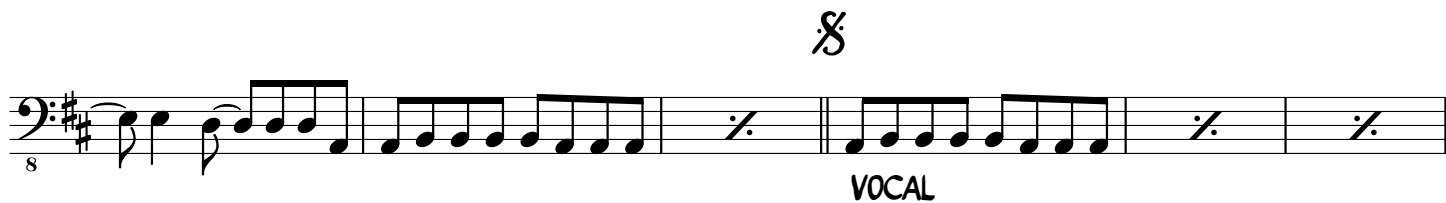




Bring It On Down

BRITISH MUSIC WRITERS COUNCIL
TOM READ
MUSICIANS' UNION 4827

Bass



8

First system of bass line musical notation in G major, starting with a treble clef and a key signature of one sharp (F#). The notation consists of a series of eighth notes and quarter notes, with a double bar line after the first measure.

8

Second system of bass line musical notation, continuing the sequence from the first system.

To Coda

8

Third system of bass line musical notation, continuing the sequence.

8

Fourth system of bass line musical notation, continuing the sequence.

D.S. al Coda



REPEAT AD LIB

8

Fifth system of bass line musical notation, enclosed in repeat brackets with a double bar line at the end.

8

Sixth system of bass line musical notation, consisting of two measures with whole notes and fermatas.